

S3010E

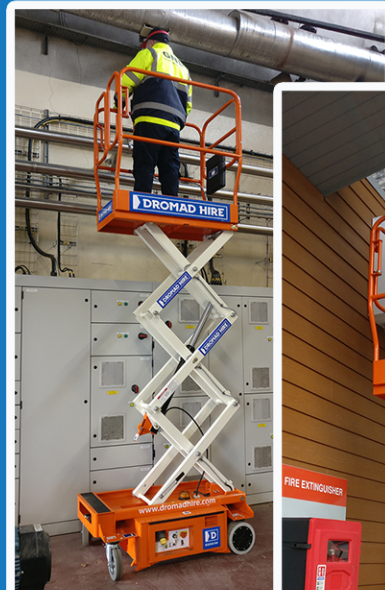
DROMAD HIRE

TOOL & EQUIPMENT HIRE

SELF PROPELLED MICRO SCISSOR LIFT

NOW AVAILABLE FOR CONTRACT HIRE

- Flexible long term rental solutions tailored for your business
- Hassle free - we take care of all maintenance along with statutory certification requirements
- 24 hour emergency breakdown cover
- Ideal for low-level interior installation and maintenance applications



FOR FURTHER INFORMATION CONTACT:
Pierce - 087 6741010

S3010E

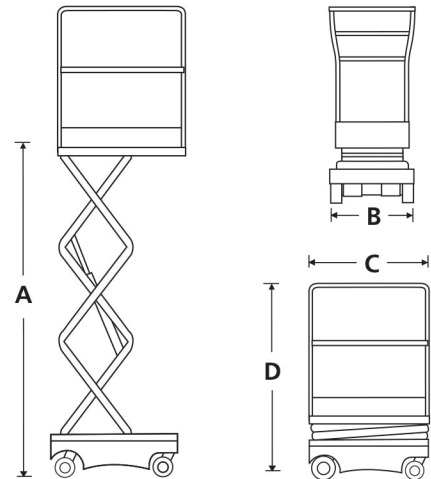
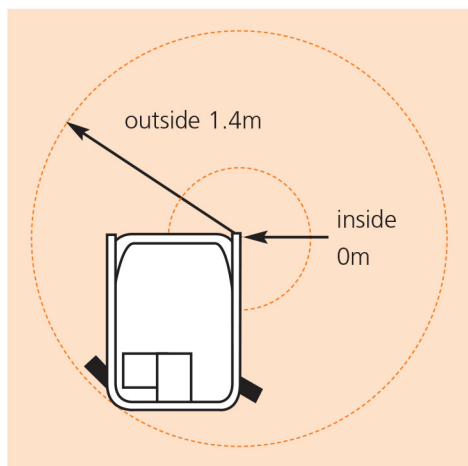
DIMENSIONS		S3010E
Max. working height		5.0m
Max. platform height (A)		3.0m
Platform size		1.09m x 0.51m
Overall width (B)		0.77m
Overall length (C)		1.26m
Stowed height (D)		1.8m
Ground clearance		58mm

PERFORMANCE	
Platform capacity (SWL)	227kg
Max. drive height	3.0m
Max. wind speed	0m/s
Max. drive speed (stowed)	3.5km/h
Max. drive speed (elevated)	0.64km/h
Raise/lower time	18/25 sec
Gradeability	25%
Max. operating slope	2°
Inside turning radius	0m
Outside turning radius	1.4m
Tyres	230mm dia. non-marking rubber
Parking brake	2 wheel automatic
Controls	2-axis proportional joystick
Drive system	DC direct drive

POWER	
Power source	2 x 12V 105Ah
Battery charger	100-240V 50/60Hz Auto, 30 amp

WEIGHT	
Weight	495kg

TURNING RADIUS



STANDARD FEATURES

- Highly manoeuvrable skid steer
- Zero inside turning radius
- Saloon-door style entry gates
- 1 person + equipment capacity indoor
- Non-marking tyres
- Proportional joystick controls
- Integrated battery charger
- Battery condition indicator
- Crane points & through-the-chassis fork pockets
- Selectable motion alarm
- Tilt & descent alarm
- Hour meter
- Horn
- 2 year parts & labour, 5 year structural warranty
- CE approved

OPTIONS

- Special paint colours

The image shows the Dromad Hire logo, which consists of a stylized 'D' made of two overlapping shapes, followed by the text 'DROMAD HIRE' in a bold, sans-serif font. Below the logo, the text 'TOOL & EQUIPMENT HIRE' is written in a smaller, bold, sans-serif font. The contact information is listed below: a telephone icon followed by '042 9339500', a mobile phone icon followed by '087 6741010', and an email icon followed by 'pierce@dromadhire.com'. At the bottom, the address 'Dublin Road, Dundalk, Co Louth, A91 NY22' is written in a smaller, sans-serif font. The entire advertisement is set against a dark blue background with a silhouette of various construction equipment at the bottom.

